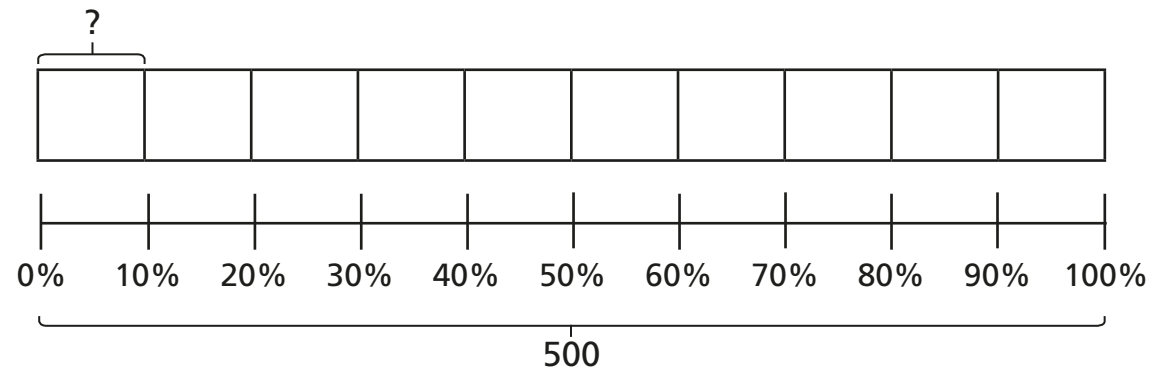


Percentage of an amount (2)

1 a) Use the bar model to find 10% of 500



10% of 500 =

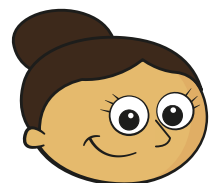
b) Use your answer to part a) to help you complete the calculations.

20% of 500 = 70% of 500 =

90% of 500 = 60% of 500 =

30% of 500 = 100% of 500 =

2



To find 5% you can find 10% and then halve it.

Use Dora's method to complete the calculations.

a) 5% of 40 =

d) 5% of 2,000 =

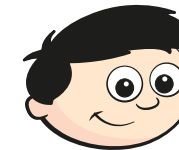
b) 5% of 400 =

e) 5% of 6,000 =

c) 5% of 4,000 =

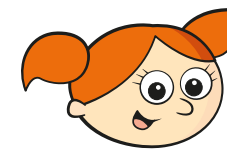
What do you notice about your answers?

3 Some children are asked to find 75% of 340



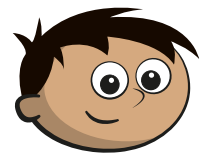
I will find 25% and multiply it by 3

a) Use Dexter's method to find 75% of 340



I will find 10% and multiply it by 7, then find 5% and add them together.

b) Use Alex's method to find 75% of 340



I will find 25% and 50% and add them together.

c) Use Amir's method to find 75% of 340

d) Are there any other methods you could use?



4 Talk to a partner about different methods for finding these percentages.

20% 90% 60% 15% 55% 40%

Use your preferred method to calculate the percentages.

a) 20% of 1,000 = d) 15% of 1,000 =

20% of 550 = 15% of 300 =

20% of 40 = 15% of 30 =

b) 90% of 1,000 = e) 55% of 1,000 =

90% of 4,230 = 55% of 4,400 =

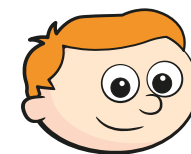
90% of 90 = 55% of 8 =

c) 60% of 1,000 = f) 40% of 1,000 =

60% of 400 = 40% of 400 =

60% of 98 = 40% of 98 =

5 Ron is calculating these percentages.
10% of 20 20% of 10



20% is double 10%, and 10 is half of 20, so I know these will both have the same answer.

How does Ron know this?

6 a) Complete the calculations.

20% of 40 = 25% of 60 =

40% of 20 = 60% of 25 =

b) What do you notice about the answers?

c) Does this always happen? Investigate with other examples.

d) Talk about your findings with a partner.

